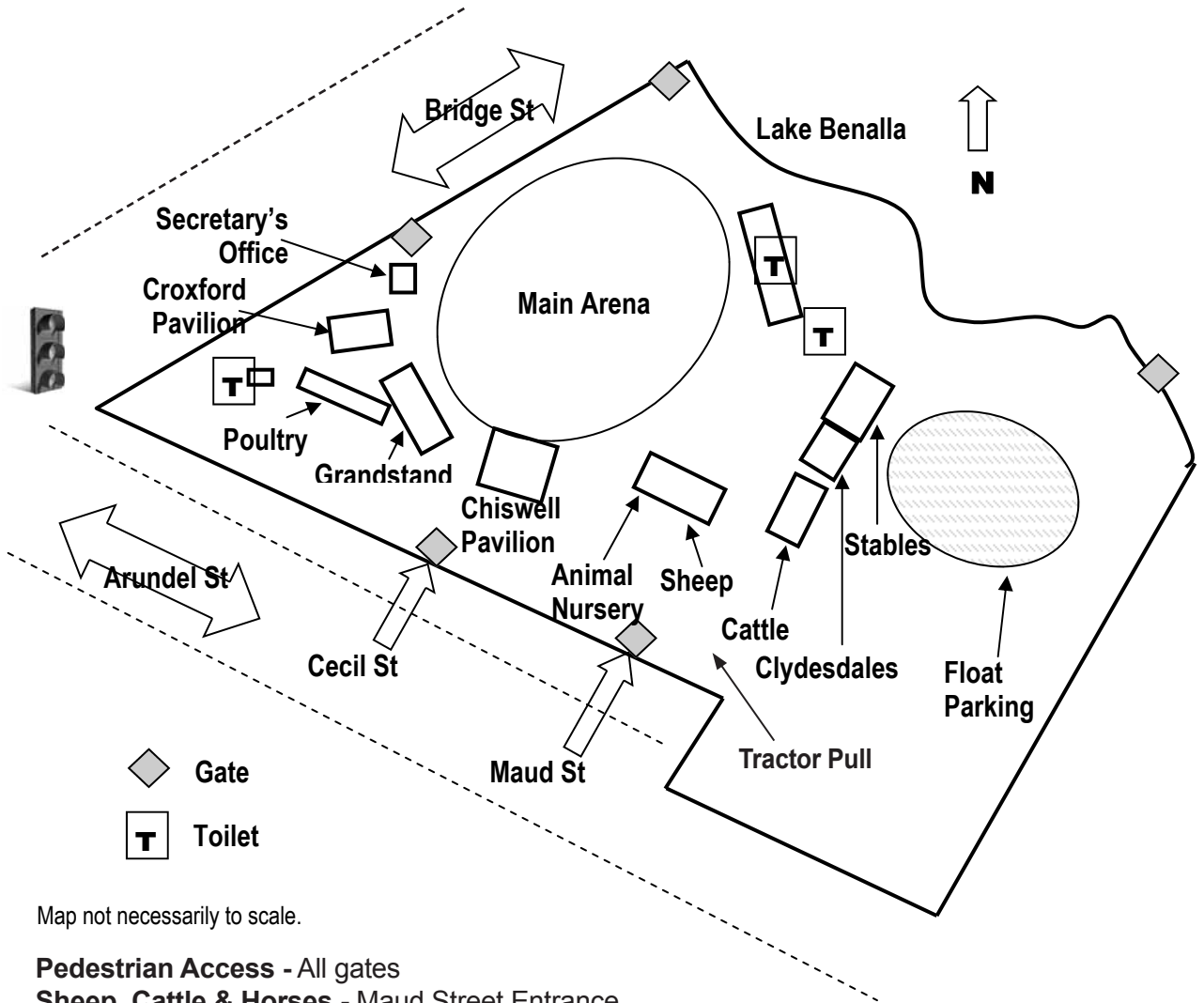


SHOWGROUNDS MAP



Map not necessarily to scale.

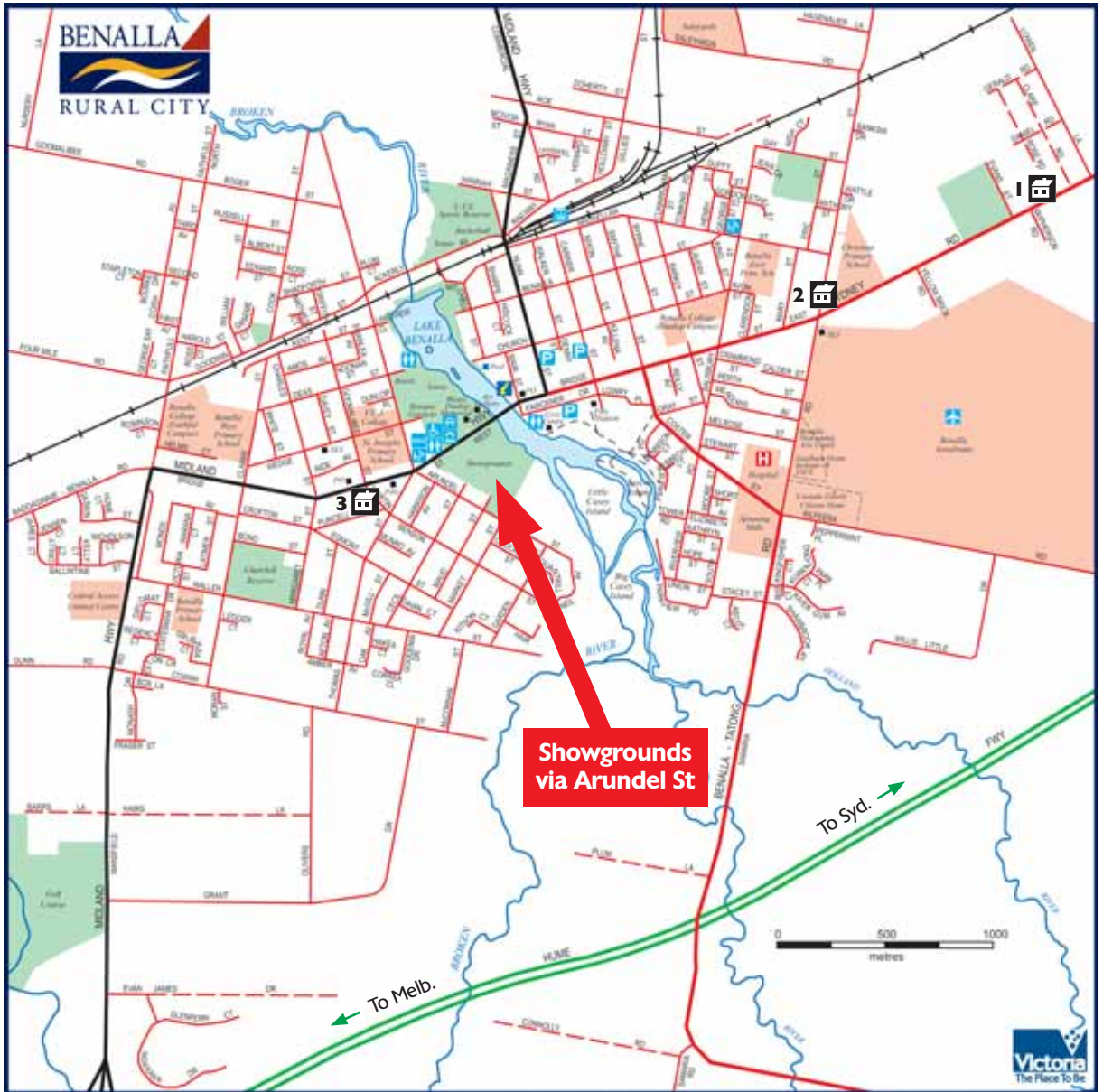
Pedestrian Access - All gates

Sheep, Cattle & Horses - Maud Street Entrance

Dogs (Fri.) - Cecil Street Entrance

NOTE: Walking Track through Showgrounds will be closed during the hours of the Show.

This map was prepared using an aerial map copyrighted by Benalla Rural City Council and used with permission. This publication may be of assistance to you but the various source providers and the Benalla Rural City Council and its' employees do not guarantee that it is without flaw of any kind or is wholly appropriate for your particular purposes and therefore disclaims all liability for error, loss or other consequence which may arise from you relying on any information in this publication.



PLACES TO STAY IN BENALLA



1. Motel Haven

105 Sydney Road, **5762 1722**
motelhaven10@bigpond.com

2. Glider City Motel

Cnr. Witt Street & Sydney Road, **5762 3399**
www.glidermotel.com.au

3. Avondel Motel

21 Bridge Street West, **5762 3677**
www.avondelmotorinn.com